

Standard Ventilation Schedule



Application icons :

WHEN YOU SELECT THE MODEL AND NUMBER OF VENTILATING FAN, THE REQUIRED AIR VOLUME IS CONSIDERED.

No. of ventilating fan = $\frac{\text{Room size (m)} \times \text{Necessary frequency of ventilation per hour (n)}}{\text{Air volume of ventilating CMH}^* \text{ *CMH}=(\text{m}^3/\text{h})}$		
Type of building and room		Necessary frequency of ventilation per hour (n)
COMPANY	Office	6
	Conference Room	12
FACTORY	Office	6
	Painting Room	20
SCHOOL	Laboratory, Auditorium, Classroom	6
	Teaching room	15
	Gymnasium	8
	Toilet	12
HOSPITAL	Waiting room	10
	Clinic, Ward	6
	Operating room	15
HOUSE	Kitchen	15
	Bathroom, Toilet	10
	Living room, Bedroom	6
PHOTO STUDIO	Darkroom	10
RESTAURANT/BAR	Restaurant	6
	Kitchen	20
HOTEL	Dinning hall	8
	Hallway	5
	Kitchen	15
	Toilet	5
	Laundry	15

Specification and standard

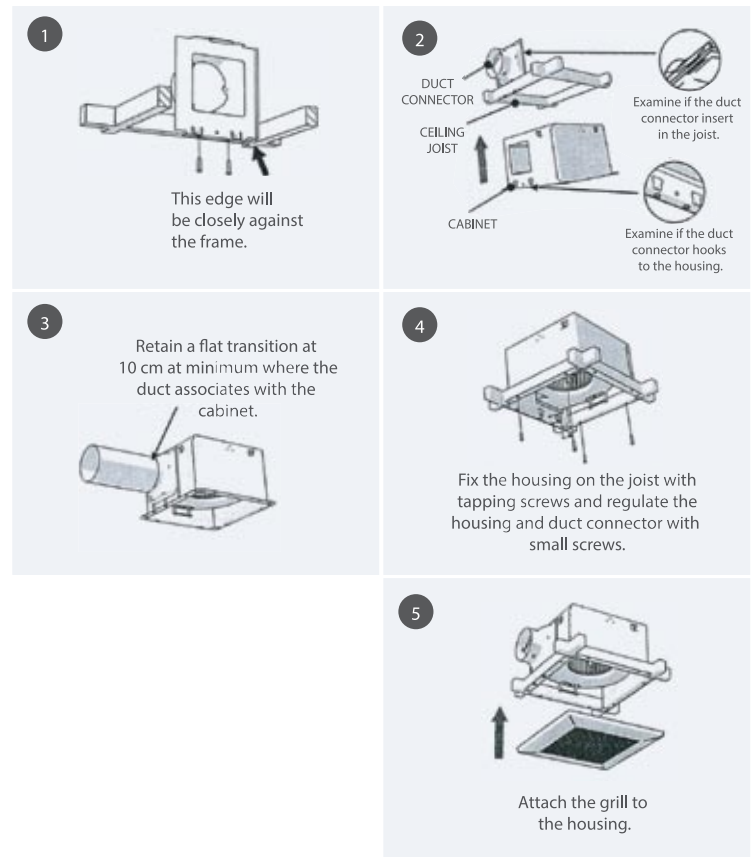
- Silence and complete with thermal fuse to cut electric off when motor has high temperature high efficiency impeller.
- The diameter of the rotor is large. The amount of high winds and around slowly to silence.
- Mask made form ABS plastic is a beautiful
- Casing mad form steel with anticorrosive
- Ball bearing for smoother and durable operation and long life
- Warranty 3 years

Usability and Specification of Wolter Fans

- Papidly decreasing remove smell
- Heat transfer , exhaust hot air and bring in fresh air
- Remove dust , blow out and small flying particles indoor
- Absorbing moisture and balancing the humidity
- Increasing oxygen , remove smell and tobacco , make you feel more comfortable

INSTALLATION

1. Install the duct connector in the ceiling joist with the screws like what the illustration shows.
2. Install the housing in the ceiling joist and connect the housing with the duct connector.
3. Position the housing in the joist with tapping screws. Fix it and duct connector with small screws.
4. Connect the duct with the duct connector and tighten with adhesive tape. Hang suspension duct to avoid external pressure.
5. Attach the grill with the housing.
6. wire the fan and install the multi-pole switch to regulate the fan.



WOLTER VENTILATION CO.,LTD

29 Moo 8 Soi Viroonraj Settakij Rd. Thamai
Kratumban Samutsakorn 74110 Thailand

E-mail : support@wolterventilation.com

www.wolterventilation.com

Tel : 034-866-555

Fax : 034-866-599

wolter
AIR IN MOTION

