

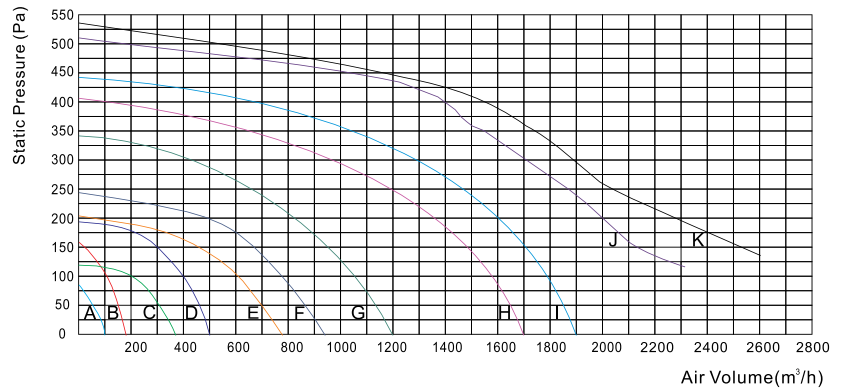
Duct Tubular Ventilation Fan

Model : DVF

- Inline Cabinet Design
- Easy to install and more space-saving
- Super Low noise with cabinet
- Use for Air supply and exhaust
- Forward Blade size 120 – 280 mm
- Casing and impeller made from steel with anticorrosive color
- Completed with thermal fuse to cut electric off when motor has High temperature
- Air volume = 100 - 2600 m³/h ,(60-1530 cfm)



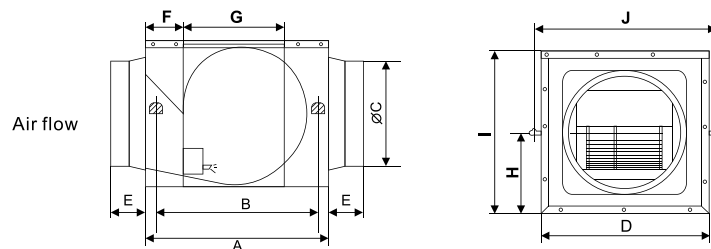
PERFORMANCE CURVE



- A: DVF-12010 H: DVF-25170
- B: DVF-12018 I: DVF-25190
- C: DVF-15036 J: DVF-28231
- D: DVF-18050 K: DVF-28260
- E: DVF-18077
- F: DVF-20092
- G: DVF-23120

DVF

Dimension



| Model | Impeller (Ømm) | Voltage (Ph/V/Hz) | Power (watt) | Speed (rpm) | Volume (m ³ /h) | Noise @1m dB(A) | Dimension (mm) | | | | | | | | | | Duct Size (mm) |
|-----------|----------------|-------------------|--------------|-------------|----------------------------|-----------------|----------------|-----|-----|-----|----|-----|-----|-------|-----|-----|----------------|
| | | | | | | | A | B | C | D | E | F | G | H | I | J | |
| DVF-12010 | 120 | 1/220/50 | 20 | 960 | 100 | 20 | 340 | 298 | 95 | 240 | 65 | 68 | 210 | 100 | 200 | 285 | ø100 |
| DVF-12018 | 120 | 1/220/50 | 37 | 1350 | 180 | 23 | 340 | 298 | 95 | 240 | 65 | 68 | 210 | 100 | 200 | 285 | ø100 |
| DVF-15036 | 150 | 1/220/50 | 55 | 1240 | 360 | 27 | 340 | 298 | 150 | 240 | 75 | 53 | 230 | 120 | 240 | 285 | ø150 |
| DVF-18050 | 180 | 1/220/50 | 125 | 1360 | 500 | 29 | 390 | 348 | 150 | 270 | 75 | 58 | 265 | 140 | 280 | 315 | ø150 |
| DVF-18077 | 180 | 1/220/50 | 157 | 1249 | 770 | 35 | 420 | 378 | 200 | 340 | 65 | 64 | 265 | 140 | 280 | 385 | ø200 |
| DVF-20092 | 200 | 1/220/50 | 187 | 1250 | 920 | 37 | 490 | 448 | 200 | 370 | 65 | 58 | 304 | 160 | 320 | 415 | ø200 |
| DVF-23120 | 230 | 1/220/50 | 275 | 1270 | 1200 | 41 | 520 | 478 | 200 | 400 | 65 | 74 | 344 | 182.5 | 365 | 445 | ø200 |
| DVF-25170 | 250 | 1/220/50 | 405 | 1040 | 1700 | 43 | 590 | 548 | 250 | 400 | 75 | 74 | 364 | 190 | 380 | 445 | ø250 |
| DVF-25190 | 250 | 1/220/50 | 535 | 1200 | 1900 | 46 | 590 | 548 | 250 | 400 | 75 | 74 | 364 | 190 | 380 | 445 | ø250 |
| DVF-28231 | 280 | 1/220/50 | 780 | 1370 | 2310 | 46 | 660 | 618 | 250 | 480 | 75 | 107 | 375 | 210 | 420 | 525 | ø250 |
| DVF-28260 | 280 | 3/380/50 | 800 | 1380 | 2600 | 46 | 660 | 618 | 250 | 480 | 75 | 107 | 375 | 210 | 420 | 525 | ø250 |